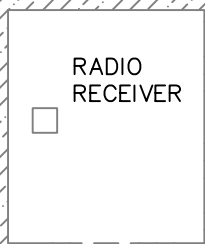
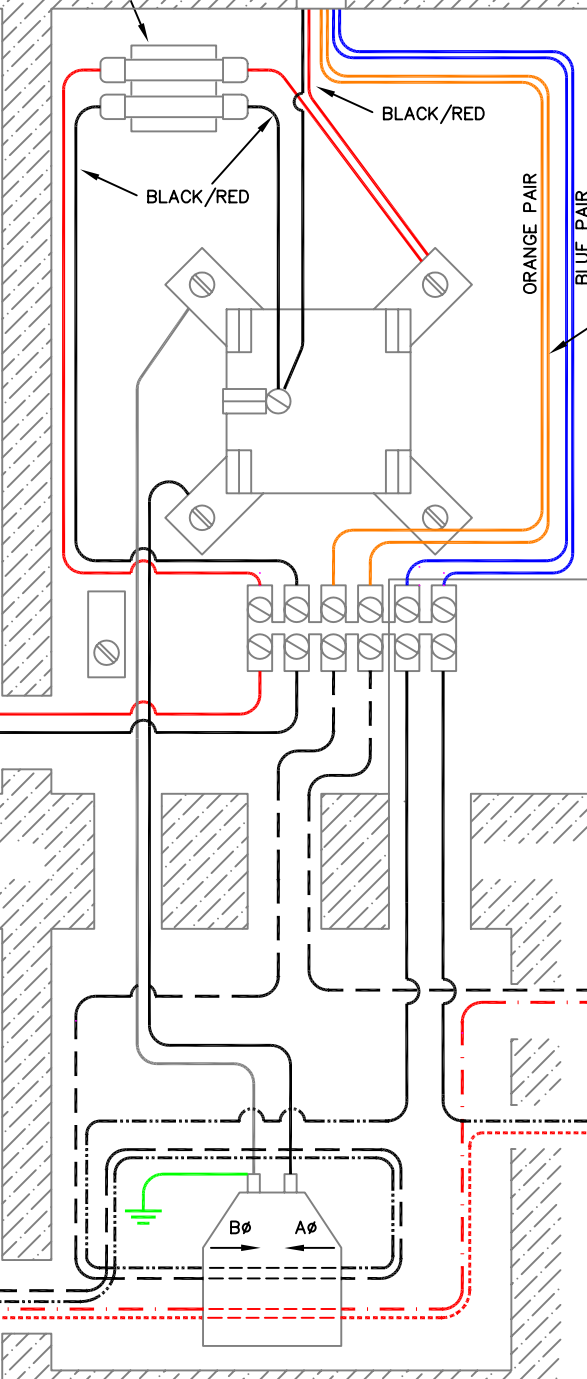
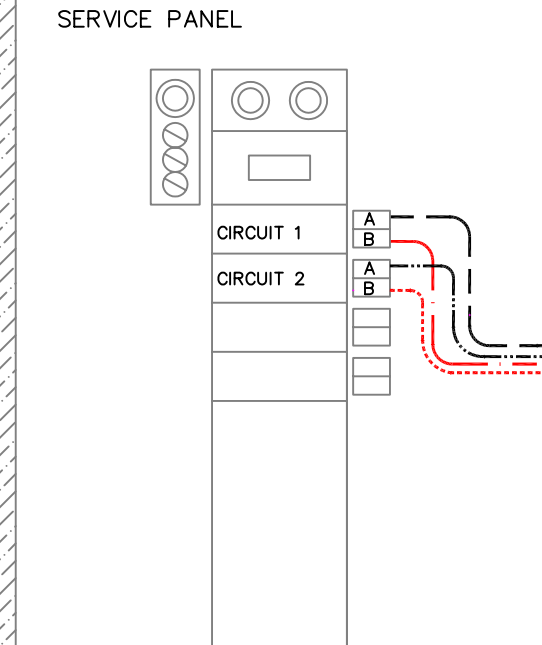
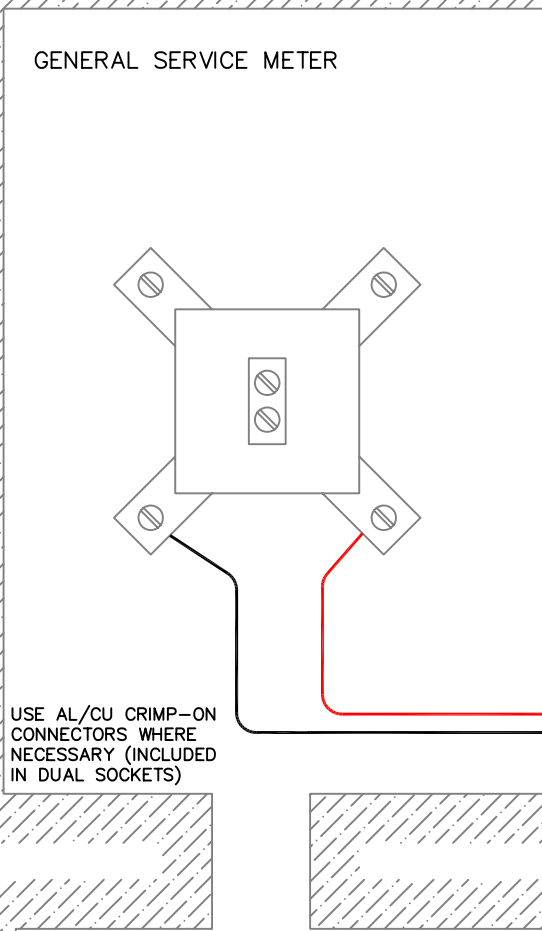


IN DUAL SOCKETS, FUSES ARE LOCATED ON GENERAL SERVICE SIDE OF COMMON WALL ABOVE KNOCKOUT.


NOTES:

ALL WIRING CONNECTIONS AND GROUNDING MUST CONFORM TO THE NATIONAL ELECTRIC CODE. ALL WIRING ADDITIONS AND MODIFICATIONS SHALL BE INSPECTED FOR YOUR SAFETY. TAPE OFF OR WIRE NUT BROWN AND YELLOW RECEIVER WIRES INDIVIDUALLY.

ORANGE PAIR SHOWN DEPICTS INSTALLATION FOR A WATER HEATER. USE THE BLUE PAIR INSTEAD WHEN CONTROLLING SPACE HEAT OR A.C.



This information is for general purposes only and is not intended to serve as a set of specifications for installation of the equipment. MVEC is not responsible for installations which it has not specifically approved. Please contact MVEC or your electrical contractor for further information.

	WATER HEATER & 1 HEATING LOAD	
	DRAWING #2	25A MAX.
	MDC	05/30/02
	REV: HJN	02/22/06