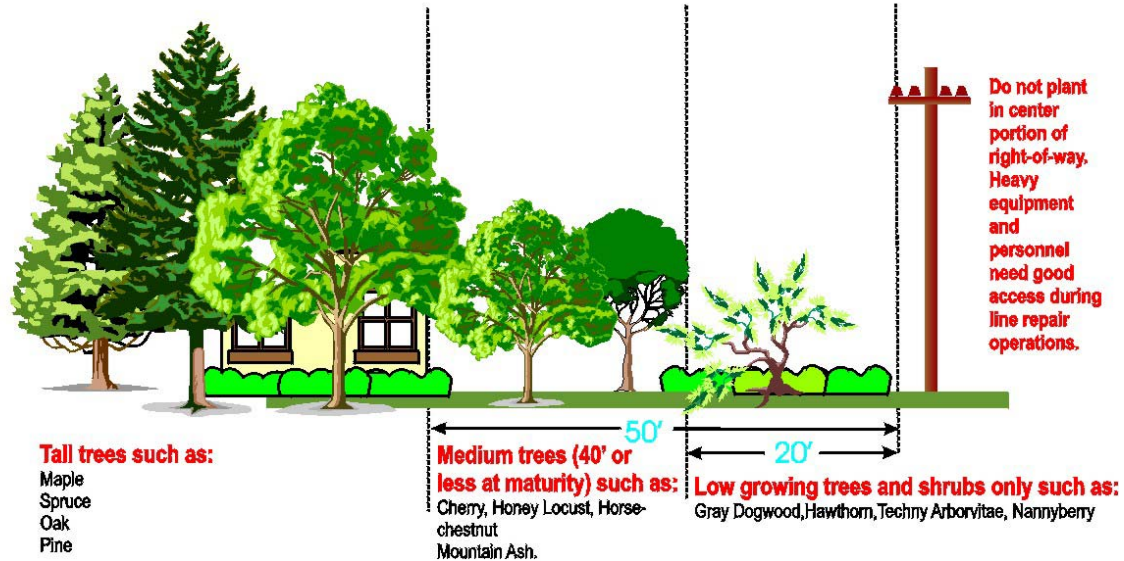


## Planting Recommendations



### Compatible Species List

Low growing trees or shrubs (15' or less at maturity)

#### Trees

Amur Maple  
 Selected Crabapples  
 (Pink Spires, Firebird, Lancelot, Louisa,  
 Coralburst, Red Jewel, Tina)  
 Euonymus Winged Tree  
 Fringe Tree  
 Gray Dogwood  
 Hydrangea Tree Form  
 Jane Magnolia  
 Korean Sun Pear  
 Miss Kim Lilac  
 Montaigne Lilac  
 Russian Hawthorn  
 Sensation Lilac

(Also, most dwarf apple, pear, plum and cherry trees are acceptable.)

#### Shrubs

Caragana (Pea Shrub)  
 Azalea  
 Purpleleaf Cherry  
 Chokeberry  
 Cotoneaster  
 Red Twigged Dogwood  
 Elderberry  
 Forsythia  
 Hazelnut  
 Honeysuckle  
 Common Purple Lilac  
 Compact Amur Maple  
 Mock Orange  
 Ninebark  
 Regent Serviceberry  
 Rhododendron  
 Smokebush  
 Snowberry  
 Spirea  
 Sumac  
 Tamarisk  
 Viburnum  
 Weigela  
 Winterberry  
 Witchhazel

#### Evergreen Trees & Shrubs

Alberta Spruce  
 Aurea Compacta Hemlock  
 Blue Shag Pine  
 Clanbrassiliana Spruce  
 DeGroots Spire Arborvitae  
 Dwarf Blue Spruce  
 Emerald Fountain Hemlock  
 Holmstrup Arborvitae  
 Japanese Yew  
 Macopin Pine  
 Mugho Pine  
 North Star Spruce  
 Sherwood Compact Spruce  
 Swiss Stone Pine "Silver Whisper"  
 Techny Arborvitae  
 Yellow Ribbon Arborvitae

Questions?

Contact Tom Gillhousen

Phone: 952.492.2313  
 800.282.6832

E-mail: [tomg@mvec.net](mailto:tomg@mvec.net)