

ElectricEye

Minnesota Valley Electric Cooperative

July 2022

Introducing MyEnergyXpert



We are excited to offer our members the MyEnergyXpert Tool from EnergyWise MN. This free tool is designed to help you identify ways to save money and energy in your home.

Visit www.mvec.net/my-energy-xpert-tool/ and follow the link to create a free account to begin exploring ways to save. The online energy assessment takes about five to ten minutes to complete, and, once you walk through it, you'll receive a personalized energy-savings plan with relevant recommendations and clear directions on how to enroll in our Energy Wise programs to receive any eligible rebates and incentives. Think of it as a digital home energy audit — customized for you.



MyEnergyXpert, combined with MVEC's Energy Wise programs and SmartHub account management tool, can help you save energy and money. Managing energy use is not only important for individual members, but for the co-op as a whole in purchasing less wholesale power and managing the resources energy production requires.

Like having your own secret agent track down energy-saving opportunities in your home!

Where can you save?

It all adds up to put a little cash back in your wallet

Attic insulation

Upgrade your attic insulation

\$40 = classic cooler



Save \$40 annually

Save 257 kg of carbon dioxide

Exterior wall insulation

Upgrade your exterior wall insulation

\$63 = dinner date



Save \$63 annually

Save 402 kg of carbon dioxide

Foundation wall insulation

Upgrade your foundation wall insulation

\$32 = 2 large pizzas



Save \$32 annually

Save 208 kg of carbon dioxide

Air sealing

Air seal your home

\$80 = pair of running shoes



Save \$80 annually

Save 571 kg of carbon dioxide

Windows and doors

Upgrade your windows and doors

\$45 = monthly phone plan



Save \$45 annually

Save 289 kg of carbon dioxide

Water heating

Upgrade your home's water heating system

\$77 = tank of gas



Save \$77 annually

Save 552 kg of carbon dioxide

online audit results of a 3,200 SF home built in 1955

Additional resources and board meeting highlights available 24/7 at www.mvec.net



Inside this issue:

Operation Round Up donates \$43,562/[page 2](#)

Be aware of Emerald Ash Borer pests/[page 2](#)

Stay away from downed lines/[page 3](#)

Will rolling blackouts affect MVEC?/[page 4](#)

MVEC

MINNESOTA VALLEY ELECTRIC COOPERATIVE

A Touchstone Energy® Cooperative

Many local organizations \$43,562 strong

Thanks to MVEC members like U who round up their monthly electric bills, the Operation Round Up trust board made the following 2nd quarter distributions:

Aging Services for Communities of Montgomery - \$3,000 for transportation services

Beacon Interfaith Housing \$2,000 for emergency shelter

Belle Plaine Food Shelf \$500

BrainPower in a Backpack of Burnsville - \$500 for food

Campfire MN - \$1,500 for camper scholarship fund

Central Elementary School of Norwood-Young America - \$680 kindergarten field trip transportation

Centennial Lutheran Church of Henderson - \$2,500 to purchase AED Units & supplies

Cologne Fire and Rescue - \$3,169 for radios

Czech Heritage Club of New Prague - \$1,470 for printing Czech Cookbook

Choose Not to Use - \$1,500 for message on a billboard

Green Isle Lions - \$1,500 for National Night Out

Henderson Area Food Shelf - \$500 for food

Jordan Baseball Association - \$1,500 for new netting system

Le Sueur Food Shelf - \$500

Lutheran Home Hope of Belle Plaine - \$770 for indoor/outdoor recreational items

Lonsdale Food Shelf - \$500

Most Holy Redeemer School of Montgomery - \$1,200 for bus transportation



MN Adopt - \$2,000 for back to school project

Oakcrest Elementary of Belle Plaine - \$1,000 for field trip transportation

Prior Lake High School Optimist Club - \$300 for pizza party door prizes

ProAct - \$1,128 to purchase two basketball hoops

Potato Head Project - \$2,500 for Care packages

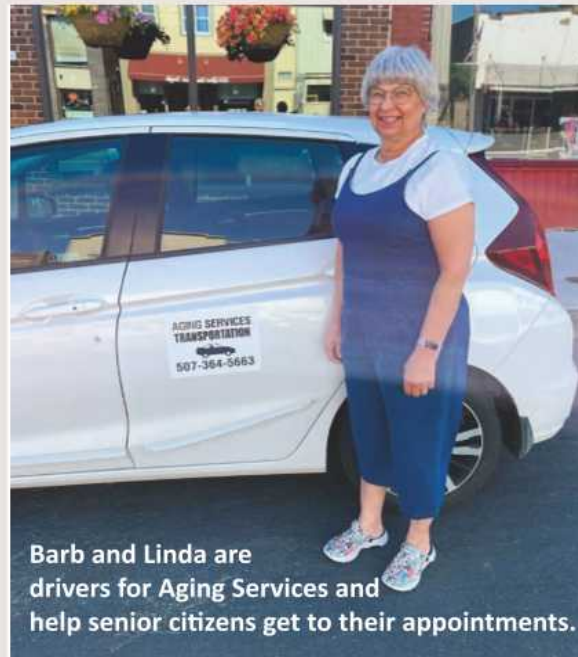
Relate, Inc - \$1,000 for 24-hour crisis coverage

Scott County CDA - \$1,000 for Fast Track county business development

Scott County Historical Society - \$840 for technology items

Shakopee Area Catholic Schools - \$620 for 6th Grade Camp

Shakopee High School - \$200 for all-night grad party



Barb and Linda are drivers for Aging Services and help senior citizens get to their appointments.

Emerald ash borer alert! Protect your ash trees

Emerald ash borer insects have entered MVEC's service area. EAB are small insects that cause BIG damage to ash trees. Carr's Tree Service, our utility clearance contractor, has certified arborists on staff that can diagnose, treat, and protect your trees so you can enjoy them for years to come. Emerald ash borer treatment is 99 percent effective when you treat pre-infestation.



Get a free estimate

Carr's Tree Service provides free estimates for a great number of services, including emerald ash borer treatment. For more information, visit www.carrstreeservice.com/ or call 888-470-3355.

ger thanks to ORU donations from U!



Volunteers help pack weekend food for school kids through Burnsville's BrainPower in a Backpack program.

Shakopee Parks and Rec
-\$935 women's water safety

Sibley County Food Shelf - \$500

Sibley County Community Connect - \$500 for food/meals

Sleep in Heavenly Peace
- \$5,000 for 25 beds

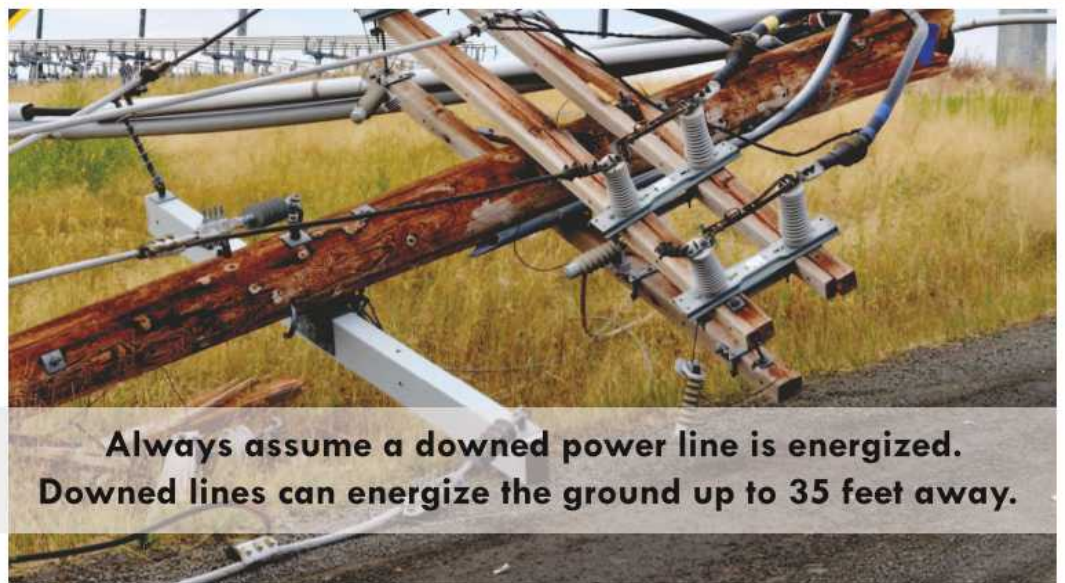
True Friends - \$2,750 for furniture

SECOND-QUARTER DISTRIBUTION
\$43,562



about signing up for Operation Round Up is available at:

www.mvec.net/operation-round-up/



Always assume a downed power line is energized. Downed lines can energize the ground up to 35 feet away.



CEO's Corner

By Ryan Hentges

Summer Regional Electric Grid Reliability

In May, the North American Electric Reliability Corporation (NERC) issued its 2022 Summer Reliability Assessment. In it, NERC — the U.S. authority on electric reliability — warned several parts of the country are at risk of energy shortfalls this summer due to predicted above-normal temperatures and drought conditions over the western half of the continent.

The announcement followed similar comments from the Midcontinent Independent System Operator (MISO).

I talked about MISO last month — MISO manages the power grid for 42 million people in the U.S. and Canada, including Minnesota. Think of MISO as the air traffic controller of the region's grid. Using sophisticated technology and procedures, MISO has a wide-area view and control of the grid that goes beyond any one utility.

Although MISO projects the Midwest will have sufficient energy for the summer, it emphasized additional measures may be necessary to maintain reliable service during periods of peak demand. This typically occurs on hot and humid days when members are using more electricity than normal.

NERC indicated the north and central areas of MISO are in a "high risk" category due to generator retirements and increased demand. **MVEC's service area is in the north and central area of MISO and is considered "high risk."**

In emergency situations, MISO calls on additional power supply resources, imports energy from other regions and performs

voluntary load reductions to manage the electric system. Temporary controlled manual load sheds, or periodic power outages (rolling blackouts), are used as a last resort to keep the system in balance. These situations are rare and would occur only after other options are exhausted. If temporary controlled load sheds are needed, procedures are in place to act immediately when directed by MISO to shed load. Load shed protocols and processes are defined and drilled routinely, so when these events happen, our wholesale providers are ready.

Could MVEC be affected? The short and honest answer is yes, it is possible. MVEC has contracted for enough generation to meet our members' needs. However, power to our substations may be interrupted by MISO in emergency situations, known as a rolling blackout. Many factors go into the decision by MISO to direct rolling blackouts. Our wholesale power providers generate sufficient supply, but ultimately MISO takes the needs of the regional electric grid into consideration when determining whether to call for emergency rolling blackouts.

We will do our best to communicate with you in advance if MISO calls for an event which interrupts power. Communications will be made on www.mvec.net, Facebook, Twitter and/or email notifications.

What can you do? Being energy conscious is important. There are lots of ways to save and conserve energy. Our website www.mvec.net is a great resource for conservation efforts. The latest news and ways to be prepared are available at www.mvec.net/summer-energy-alert/ or scan the QR code above.



Thank you for taking the time to read this month's column. I hope it conveyed a balance of keeping you informed of potential issues, without unnecessarily sounding an alarm. We appreciate your partnership, and we'll continue our focus on providing safe, reliable, and affordable electric service.

WANT EASY SAVINGS?

Go **Wi-Fi**

- Precise control from device or phone!
- Get a \$50 rebate
- Save 10% on summer energy usage!

www.mvec.net/wifi-thermostat-program

The Electric Eye is the official publication of Minnesota Valley Electric Cooperative
Chief Executive Officer: Ryan Hentges

Editor: Susan Larson • Contributor: Jessica Heinz
www.mvec.net • info@mvec.net
MVEC is an equal opportunity provider and employer

Office Hours: M - F: 8 a.m. - 4:30 p.m.
24-Hour Dispatch/Outages:
952.492.8255 or 800.232.2328

Contact Member Service:
952.492.2313 or 800.282.6832
Pay By Phone: 866.999-4504



A Touchstone Energy® Cooperative
125 Minnesota Valley Electric Drive
Jordan, MN 55352