

Running and energy demand: Both take prep and pacing

CEO Update from Marvin Denzer

Summer is here, and I hope, despite the mosquitoes, you are enjoying the warm weather and outdoor activities. For me, a favorite activity is running. I've run more than just a few 5Ks, marathons, and Ironman competitions in the past 40-some years.

Running a race has a significant impact on my personal energy demand. Being prepared for the race and anything that may happen is just as important as the race itself. Using my energy efficiently requires training and pacing myself.

Just like there is demand for personal energy when running, the cooperative has to focus on its energy demand and the impacts to the system. Last summer, we kept an eye out for the possibility of rolling blackouts. Rolling blackouts are scheduled, but temporary

power outage events rotated among utilities within a power region, usually on heavy power demand days. Fortunately, in our area, the Midcontinent Independent System Operator (MISO) did not need to do this in 2022.

This year, we are contending with similar energy capacity concerns. We do not anticipate blackouts will affect MVEC this summer; however, we must be aware of the possibility. Unfortunately, while blackouts are unlikely, they are possible.

As traditional electricity generation plants are retired and replacements such as solar and wind are not always available 24/7, reliability comes into consideration. Without adequate transmission, reliability can be at risk, which increases the threat of service



I've powered through many running events. Seventeen years since this Ironman competition, my kids Madison and Jacob now keep pace with me.

disruptions. As a last resort, rolling blackouts help restore balance to the supply and demand of electricity. A blackout can be up

CEO Update continued on page 2

One of the 7 Co-op principles: **MVEC's Commitment to education**



Last month, energy specialist Michael Hinde led a day-long group session at Shakopee High School on the ins and outs of Electric Vehicles.

Hinde and engineer supervisor Daniel Turner gave students the chance to see MVEC's two EVs — a Tesla Model 3 and a Ford Lightning — up close and personal and provided rides for students in Shakopee's environmental studies pathway, which allows kids the opportunity to focus more on those subjects.

"We cover electric and gas vehicles and some of their impacts on the environment in class, so this is really great for the kids to see these cars up close and experience what they have to offer," said chemistry and environmental studies teacher Matt Johnston.

Prior to students riding in the EVs, Michael went over some of the programs and benefits MVEC offers for electric vehicles. Currently, MVEC offers EV24, a 24-hour, Time-of-Use (TOU) Electric Vehicle charging program where members can charge their vehicle whenever needed, with electric rates

Community continued on page 2

Additional resources and board meeting highlights available 24/7 at www.mvec.net



Inside this issue:

More MVEC at local schools/[page 2](#)

See tree trimming guidelines/[page 3](#)

MN legislation impacts co-op members/[page 4](#)

ORU gives back, helps Cologne FD/[page 4](#)

MVEC

MINNESOTA VALLEY ELECTRIC COOPERATIVE

A Touchstone Energy® Cooperative

CEO UPDATE from page 1

to an hour, then the power is restored, and another area is turned off – hence, the rolling. It's like pacing the power grid.

Still, the likelihood of all these negative events happening together (lost generation, higher demand, plants going offline, wind not blowing) is low. It is MISO's job to plan for the region's overall capacity needs. At MVEC, we're glad MISO is looking out for our region's power supply.

Thank you for being a member of MVEC. In addition to the information we have at www.mvec.net/energy-costs/, we promise to keep you informed by email if summer energy conditions evolve.



Clockwise from top left: MVEC showed off a bucket truck and digger truck at Shepherd's Flock Preschool Touch-A-Truck event in Prior Lake; MVEC lineman Cody Wheeler shows a Jordan kindergartener the inside of an MVEC utility truck; Linemen Beau and Dylan teach hot line safety at Jordan Middle School.

Community continued from page 1

that fluctuate by the time of the day. The times and charges are a reflection of power supply, power demand, and wholesale power costs – passing along the savings during non-peak times. By recording EV usage with a dedicated electric meter on a member's home, EV usage is separated from the home's general usage and is tracked over fluctuating time-based rate periods.

When enrolled, members can save money on charging EVs by utilizing the EV-Wise time. To ensure sufficient charging time, this rate starts at 10 p.m. and ends at 5 a.m. seven days a week. By joining, members will also help MVEC with managing the reliability of our grid. MVEC can help reduce its wholesale electric bill, and the savings are passed on to the members with lower rates.

Jordan Safety Day

'How do you get the bucket up there?' 'What are the cones for?' and 'What if we don't know the number to 911?' were a few of the hard-hitting questions our MVEC experts were asked at a

safety and hot-line demo for Jordan and St. John the Baptist School kindergartners. A pair of co-op engineers, Kyle Neal and Daniel talked electrical safety during their hot-line demo while linemen brought a bucket truck to show how high in the air MVEC linemen sometimes have to work to keep the power on.

Touch-A-Truck

It was all smiles for the kids (and linemen) as Joe McKernon and Dylan Peterson showed off our digger and bucket trucks at Shepherd's Flock Preschool Touch-A-Truck event. The utility trucks were a big hit for children to check out, along side area firetrucks, police vehicles, school buses and a delivery truck.

Jordan Middle School

MVEC recently sent apprentice linemen Beau Kaske and Dylan, along with Member Engagement Specialist Jessica Heinz, to Jordan Middle School for career day. They spoke to students about the education needed to get a job in their industry, and what they liked most about it. The students gained insight into the linemen's tools and gear used to climb electric poles and to stay safe while working with energized power lines.

Summer Savings Tips

- Set your thermostat at 78 degrees or higher.
- Install a Wi-Fi thermostat to get a \$50 rebate and save 10% on June-Sept. energy usage.
- Change your furnace filter - this can reduce wear and tear and energy usage by up to 15%!
- Turn off lights and other electronics when not in use.
- Use major appliances (washer, dryers and dishwashers) after 10 p.m. when demand is less.
- The free My EnergyXpert Audit Tool can help find areas in your home that may need energy efficiency improvements.
- Emails are the best way for us to send out last-minute emergency info. Update your email at www.mvec.net.



Free!
YOUTH BASEBALL CLINIC!

MVEC
MINNESOTA VALLEY ELECTRIC COOPERATIVE
A Southern Energy Cooperative

SUNDAY, AUG. 6 / JORDAN, MN

OPEN TO EVERYONE, AGES 6-12!

FIELD:

201 Hope Avenue
Jordan High School Field

TIME:

1:00 - 3:00 p.m.



HOST:

Minnesota Valley
Electric Cooperative

REGISTER:

PLAYBALLMN.COM

ROW: making sure power lines are clear from trees

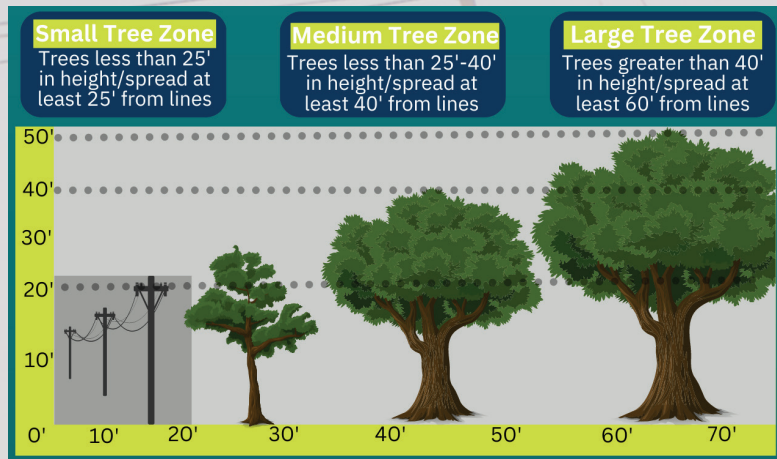
In Minnesota, we have a short time to enjoy our trees in full bloom. But that leaves your local co-op with even less time to figure out how trees might affect the power lines in a given summer. And this year is no different.

As part of our ongoing efforts to maintain reliability and safety within our system, MVEC needs to ensure that vegetation near power lines is controlled. This initiative helps prevent power outages, reduce the risks of

wildfires and ensures the safety of our members and linemen.

MVEC's 2023 tree clearing plan involves the removal of vegetation, including trees, shrubs, and other plants, within the Right-Of-Way (ROW) area surrounding our distribution lines. The ROW is a designated area that allows our crews to access and maintain the power lines, ensuring efficient and uninterrupted electricity delivery.

If your summer plans include planting a new tree, there are guidelines to follow in the graph below that will help ensure the co-op's lines are safe for years to come.

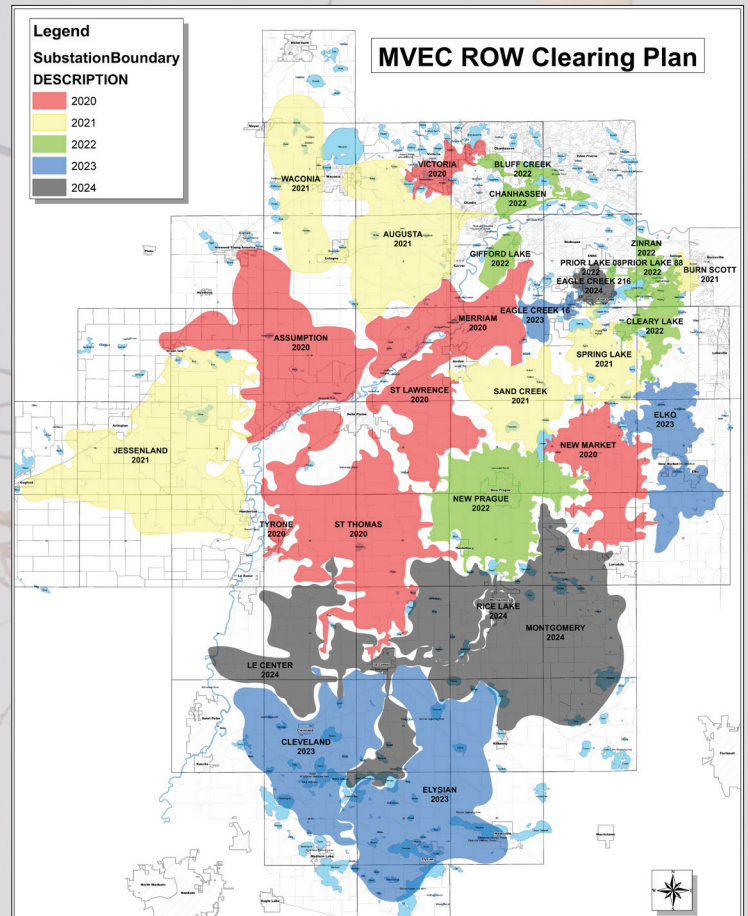


Avoid the big green box

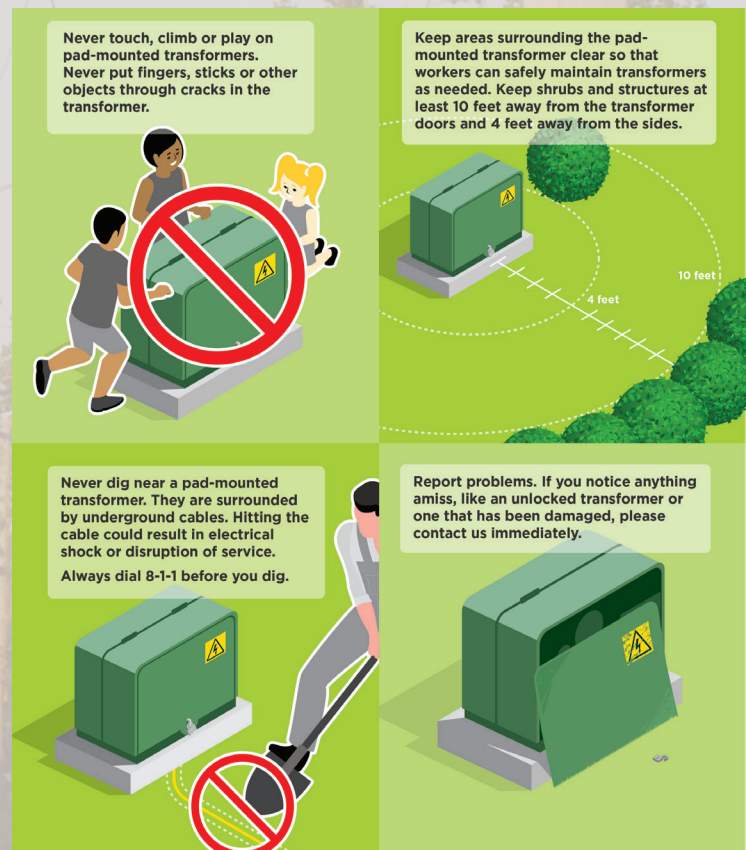
Pad-mounted transformers, those big green utility boxes commonly seen around homes and businesses, serve the purpose of lowering high voltage to standard household voltage so you can safely power electronics, appliances, and lighting. The fiberglass base is a safe and secure foundation for these transformers. If trees, shrubs or flowers are too close, it impedes our line worker's ability to make repairs and restore power.

Barriers, such as landscaping and fencing, should stay clear of electrical equipment. Additionally, MVEC has the right to remove anything in the way. While it may be tempting to "camouflage" transformers with landscaping, please remember that cooperative crews need at least 10 feet of clearance at the opening of a pad-mounted transformer and four feet at the rear and sides of the housing.

Visit our website for more tree trimming and Right-Of-Way tips! As summer moves on and your landscaping projects begin to grow MVEC asks that members be aware of the pad-mounted transformer bases on their property. www.mvec.net/tree-trimming/



Currently, the co-op is in the middle of a five-year plan to help maintain ROW areas and improve reliability. MVEC plans to clear areas near Cleveland, Elysian, Elko New Market and our Eagle Creek substation in 2023, as shown above.



Operation Round Up gives back to local groups

In the second quarter of 2023, MVEC's Operation Round Up Trust Board gifted \$48,086 in grants throughout the service area, which nearly doubles the first quarter total. This included a \$1,690 donation to the Cologne Fire Department, which purchased new water and ice rescue safety suits. To date, MVEC's generous members who "round-up" their monthly electric bills have donated more than \$2.2 million to hundreds of local organizations.



Cologne firemen model their new safety suits.

2nd quarter grants include:

- **Belle Plaine Food Shelf:** \$500 for food
- **Belle Plaine Robotics Team:** \$1,000 toward cost of competition
- **Bountiful Basket Food Shelf:** \$2,000 for shelving
- **Boys Scouts of America - Troop 332:** \$600 Lagoon Park landscaping
- **BrainPower in a Backpack:** \$500 for weekend food packages
- **Burnsville High School HOF:** \$300 for graduate accomplishments
- **Camp Fire Minnesota:** \$2,000 scholarship fund for summer camp
- **Choose Not to Use:** \$3,000 for billboards and presentations
- **Cologne Academy:** \$500 for rental of microphone and spotlights
- **Cologne Fire & Rescue Dept.:** \$1,690 for new water and ice rescue safety suits
- **Foster Adopt Minnesota:** \$2,000 for school shopping event
- **Le Center Volunteer Ambulance:** \$4,000 for new tourniquets
- **Le Sueur County Fair:** \$3,000 for cement in sheep/goat building
- **Le Sueur Co. Toward Zero Deaths:** \$2,400 for new bike helmets
- **Le Sueur Food Shelf:** \$500 for food
- **Le Sueur-Henderson Prom:** \$200 for food, games and prizes
- **Lonsdale Area Food Shelf:** \$500 for food
- **New Prague Area Schools:** \$3,420 for 5th-grade program/trip
- **Peace Center Food Shelf:** \$500 for backpack program
- **ProAct, Inc.:** \$1,205 for chair, games, TV and button maker
- **Relate Counseling Center:** \$2,500 mental health care offset
- **Rice County Historical Society:** \$4,106 for electrical wiring needs
- **Rotary Club of Le Sueur:** \$500 for backpack and literacy program
- **Scott Co. CDA-CFE:** \$3,500 for Fast Track Challenge
- **Sibley Co. FoodShare:** \$1,500 for new external signage
- **Sibley East Visual Arts Team:** \$250 for field trip
- **Southern Valley Alliance:** \$2,000 for shingle install on new building
- **St. Paul's United Church of Christ:** \$2,035 for new AED unit
- **Tri-City United Prom:** \$200 for food, games and prizes
- **True Friends:** \$1,480 for new hospital-grade loveseat
- **Waconia High School Prom:** \$200 for food games and prizes



Learn more at mvec.net/operation-round-up/

2023 legislation will impact electric co-op members

The 2023 legislative session, which ended May 22, was one of the most consequential in history for Minnesota's 1.7 million electric cooperative members. Big, long-term impacts that will be felt by everyone using electricity in the state include:

100% Carbon-Free by 2040

All electricity sold in the state must come from carbon-free sources by the year 2040. Minnesota's electric cooperatives are leaders in navigating the clean energy transition while keeping electricity reliable and affordable. However, this new law does present significant challenges. A lot of investment, innovation, and ingenuity will

be necessary to avoid cost increases and potential service disruptions, while meeting the mandate.

State Competitiveness Fund

Investments in Minnesota's electric grid are more crucial than ever. Lawmakers put \$190 million into a newly created State Competitiveness Fund to be used to attract hundreds of millions of dollars for investments in Minnesota's energy infrastructure. MVEC can tap into these funds, including an additional \$5.3 million specifically for consumer-owned utilities, for projects to improve affordability and reliability.

Electrification Rebates and Grants

Minnesota's EV rebates include up to \$2,500 for a new electric vehicle with a sale price below \$55,000 or up to \$600 for a used vehicle under \$25,000. The rebate is open to individuals, businesses, nonprofits, and governments; those who have already received an EV rebate or tax credit from Minnesota are not eligible. Those looking to purchase a high efficient heat pump to heat and cool their home could receive rebates of up to \$4,000. The legislature also made grant money available for solar on schools, electric bikes, electric school buses, home weatherization work and more.

The Electric Eye is the official publication of
Minnesota Valley Electric Cooperative
Chief Executive Officer: Marvin Denzer

Editor: Dan Ring • Contributors: Jessica Heinz, Susan Larson
www.mvec.net • info@mvec.net
MVEC is an equal opportunity provider and employer

Office Hours: M - F: 8 a.m. - 4:30 p.m.
24-Hour Dispatch/Outages:
952.492.8255 or 800.232.2328

Contact Member Service:
952.492.2313 or 800.282.6832
Pay By Phone: 866.999.4504

MVEC
MINNESOTA VALLEY ELECTRIC COOPERATIVE
A Touchstone Energy® Cooperative
125 Minnesota Valley Electric Drive
Jordan, MN 55352